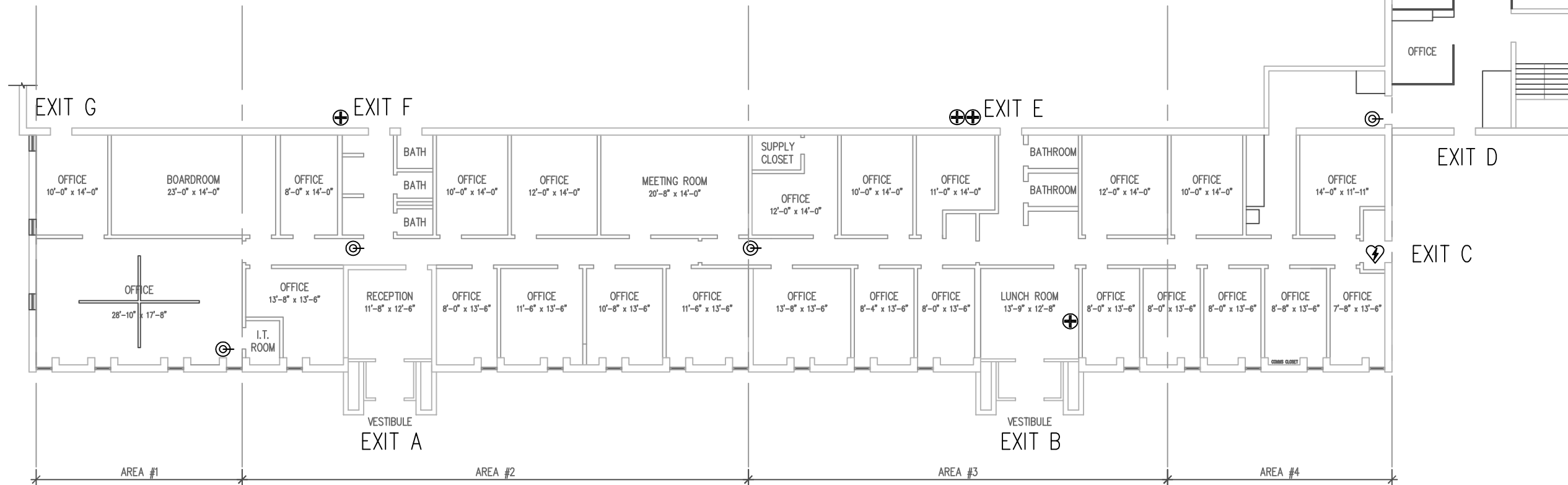


SECOND FLOOR PLAN



OFFICE FLOOR PLAN

- ⊕ FIRST AID STATION
- ⊙ FIRE EXTINGUISHER
- ♥ DEFIBRILLATOR

AREA	EXIT TO USE
1	G
2	A, F
3	B, E
4	G
5	G
6	2B-D, 2A

ALL EMPLOYEES TO ASSEMBLE AT EAST PARKING LOT

EMPLOYEES SHALL NOT OBSTRUCT EMERGENCY PERSONNEL

REVISIONS -- DRAWING ISSU

DATE	DESCRIPTION
2015-NOV-11	

PST Prestressed Systems Incorporated
 4955 Walker Road
 Walker Rd. at Hwy. 401
 Windsor, Ontario N9A 6J3

SP PRECAST CONCRETE COMPLIES WITH CRA STD. A23.4

CP MEMBER

PROJECT:
PRESTRESSED SYSTEMS INC.
 WINDSOR, ONTARIO

DRAWING TITLE:
EVACUATION PLAN

ASSEMBLY POINT